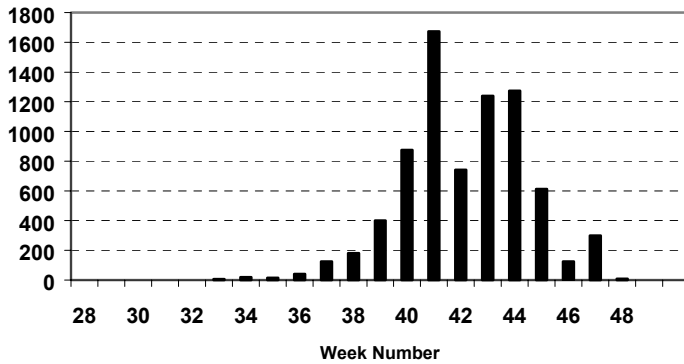


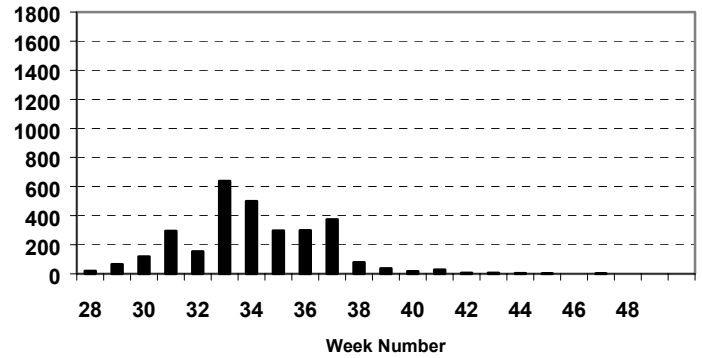
2004 BRULE RIVER FALL FISHWAY UPDATE

A total of 11735 trout and salmon were counted as they migrated upstream through the lamprey barrier/fishway from July 6 through November 29. Water levels for most of the season were again below average and likely influenced peak movement for most species and angler success. The steelhead population remains very healthy with the fall portion of the run comprised of 7635 fish. The peak occurred during the week of October 3rd. Recruitment from the “2002” year class to the fishery appears to be below average as only 268 wild three year old jacks were counted. Causes for the reduced number may be a result of poor reproduction, poor smolt survival in Lake Superior due to the extremely late and cold “2004” summer growing season or maybe a result of delayed growth and maturity due to the cold summer and selected not to enter the stream. If the latter is correct, then the fishery wouldn’t suffer, otherwise some reduction in first time spawners will be realized the next two years. The brown trout run was 2941 with the peak occurring the second week of August. This was the smallest run for some time and was likely negatively influenced by poor fry survival due to the record flood in the spring of 2001. Returns of coho salmon continue to decline with only 1001 counted, lowest number since monitoring began. Additionally, chinook numbers remain depressed with 145 passing by the observation window. Other salmonids counted included 6 pink salmon, 3 brook trout, 2 lake trout and 1 splake.

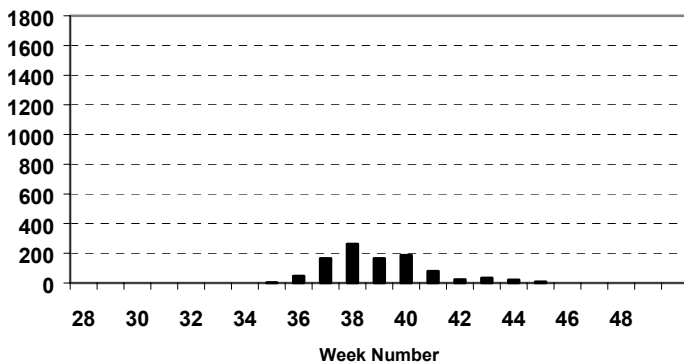
STEELHEAD



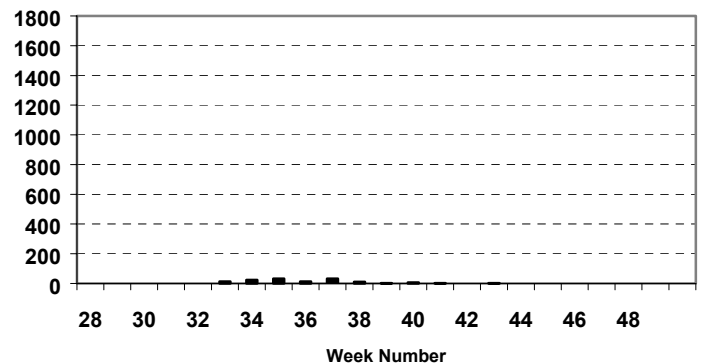
BROWN TROUT



COHO SALMON



CHINOOK SALMON



| Year | Brown Trout | Chinook Salmon | Coho Salmon | Steelhead Fall | Steelhead Spring | Steelhead Total | Estimated Stocked Steelhead |
|---------|-------------|----------------|-------------|----------------|------------------|-----------------|-----------------------------|
| 2001-02 | 5533 | 258 | 1623 | 5484 | 1124 | 6608 | 1118 |
| 2002-03 | 4425 | 271 | 3249 | 7448 | 2035 | 9483 | 1985 |
| 2003-04 | 3871 | 113 | 1087 | 8251 | 1997 | 10248 | 2026 |
| 2004-05 | 2941 | 146 | 1001 | 7635 | --- | --- | 1342 |